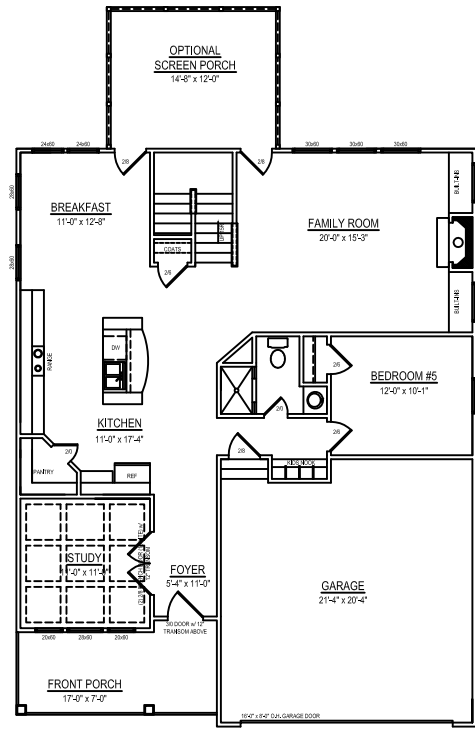
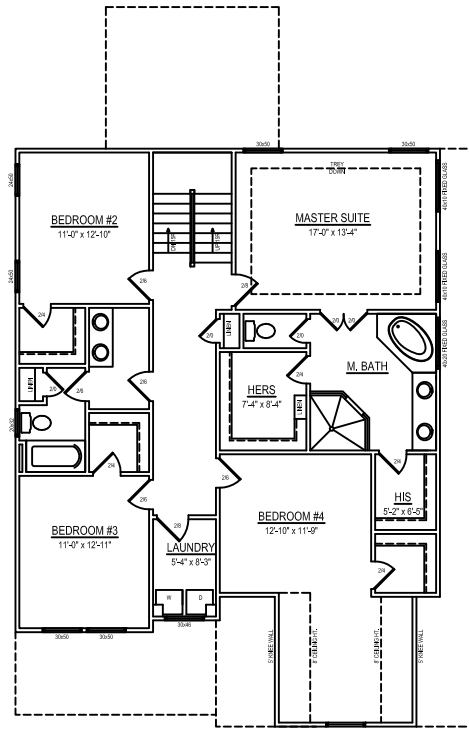


# elm street

BUILDERS



**FIRST FLOOR PLAN**  
CEILING HT. = 9'-0"



**SECOND FLOOR PLAN**  
CEILING HT. = 9'-0"

**HEATED SQUARE FOOTAGE**

FIRST FLOOR =	1286	THIRD FLOOR =	N/A
SECOND FLOOR =	1482	BASEMENT =	N/A
<b>TOTAL HEATED = 2768</b>			

**Northbrook-EC**